

Sonoma Water Water Shortage Assessment Report

Prepared for
Sonoma Water
Santa Rosa, California
May 2026



201 North Civic Drive, Suite 300
Walnut Creek, CA 94596

Table of Contents

List of Figures.....	iii
List of Tables	iii
List of Abbreviations	iv
1. Introduction.....	1-1
1.1 Sonoma Water Overview	1-1
1.2 Service Area	1-1
1.3 Water Supplies.....	1-3
1.3.1 Surface Water.....	1-3
1.3.2 Groundwater	1-3
1.4 Transmission System	1-4
2. Annual Water Supply and Demand Assessment.....	2-1
2.1 Purpose	2-1
2.2 Methodology.....	2-2
2.2.1 Decision-making Process.....	2-3
2.3 Key Data Inputs	2-4
2.3.1 Unconstrained Demand	2-4
2.3.2 Available Water Supply	2-5
2.3.3 Existing Infrastructure Capabilities and Plausible Constraints	2-7
2.4 Supply and Demand Analysis.....	2-8
3. Shortage Response Actions.....	3-1
3.1 Planned Response Actions.....	3-1
3.2 Ongoing Reassessment.....	3-1
4. Conclusion	4-1
5. References.....	5-1
Appendix A: AWSDA 2026 Reporting Tables.....	A

List of Figures

Figure 1-1. Sonoma Water service areas and water transmission facilities.....1-2
Figure 2-1. Timeline for Russian River modeling and AWSDA2-6

List of Tables

Table 2-1. Annual Assessment Information2-2
Table 2-2. Projected Water Demands.....2-5
Table 2-3. Projected Water Supplies2-7
Table 2-4. Potable Water Shortage Assessment2-8
Table 3-1. Planned Shortage Response Actions.....3-1

List of Abbreviations

ac-ft	acre-feet
ASR	aquifer storage and recovery
AWSDA	Annual Water Supply and Demand Assessment
cfs	cubic feet per second
FIRO	forecast-informed reservoir operations
Marin Water	Marin Municipal Water District
PG&E	Pacific Gas and Electric
RR ResSim	Russian River System Model
Sonoma Water	Sonoma County Water Agency
SWRCB	State Water Resources Control Board
TUCP	Temporary Urgency Change Petition
USACE	United States Army Corps of Engineers
UWMP	Urban Water Management Plan
WCM	Water Control Manual
WSCP	Water Shortage Contingency Plan

Section 1

Introduction

California Water Code §10632.1 requires urban water suppliers to conduct an annual water supply and demand assessment (AWSDA) to evaluate water supply reliability for the current year and one subsequent dry year. This Water Shortage Assessment Report presents an overview of Sonoma County Water Agency (Sonoma Water) and findings from its 2026 assessment.

1.1 Sonoma Water Overview

Sonoma Water provides wholesale water, principally from the Russian River, to eight water contractors, and other water transmission system customers, including Marin Municipal Water District (Marin Water), collectively referred to as Sonoma Water’s customers. The water contractors and other water transmission system customers that Sonoma Water serves include:

- **Water Contractors:** Cities of Santa Rosa, Petaluma, Rohnert Park, Cotati, and Sonoma; Town of Windsor; North Marin Water District; and Valley of the Moon Water District
- **Other Water Transmission System Customers:** Forestville Water District, California-American Water Company (Larkfield-Wikiup area), Kenwood Village Water Company, Lawndale Mutual Water Company, Penngrove Water Company, County of Sonoma, State of California, Santa Rosa Junior College, and Marin Water

Sonoma Water’s customers retail water directly to different types of water users, including single-family and multi-family residences; commercial, industrial, and institutional/governmental users; and landscape irrigators. As of 2025, Sonoma Water and its customers collectively serve approximately 631,000 people, and the population is projected to grow to more than 811,000 by 2050 as detailed in Sonoma Water’s adopted 2025 Urban Water Management Plan (UWMP).

Sonoma Water also supplies small quantities of water (when available) from its transmission system to surplus water customers, and allows Russian River customers (Town of Windsor, City of Healdsburg, Camp Meeker Recreation and Park District, and Occidental Community Services District) to divert water from the Russian River under Sonoma Water’s water rights using their own facilities. In this regard, the Town of Windsor is unique in that it is the only contractor that diverts Russian River water under Sonoma Water’s water rights using its own facilities while also purchasing water directly through a connection to Sonoma Water’s transmission system.

1.2 Service Area

Sonoma Water’s service area covers a large part of Sonoma County and the eastern portion of Marin County. The service areas of Sonoma Water’s customers are shown in Figure 1-1, as are some of Sonoma Water’s water supply, storage, and transmission facilities. Sonoma Water’s infrastructure is distributed over a large geographic area with varying topography.

In common with much of the California coastal area, Sonoma Water’s service area experiences a wet and dry season. Approximately 93 percent of the annual precipitation normally falls during the wet season (October to May) with a large percentage of the rainfall typically occurring during three or four major winter storms. Given the region’s dependence on these intermittent storms, reservoir management is an important part of Sonoma Water’s supply operations.

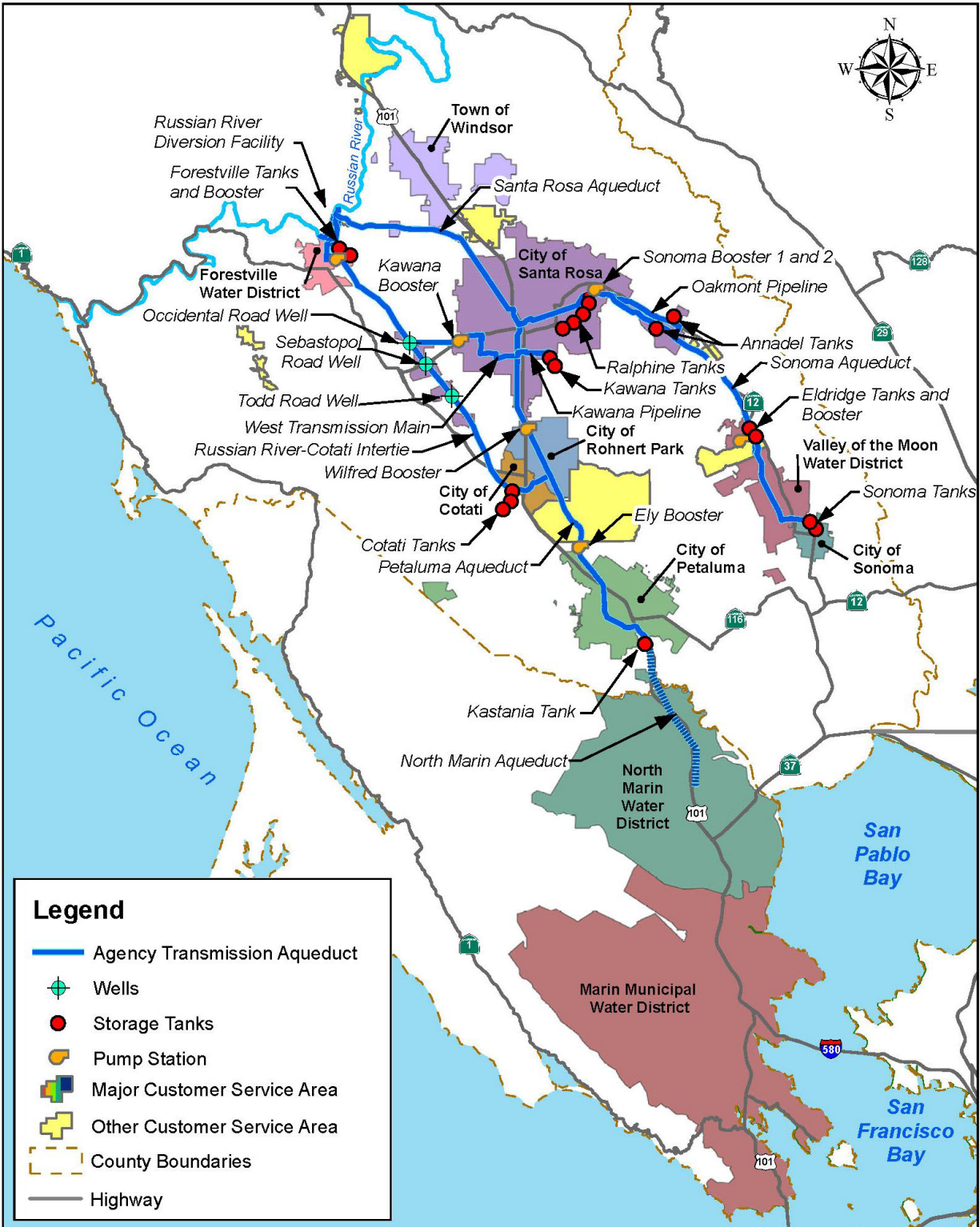


Figure 1-1. Sonoma Water service areas and water transmission facilities

1.3 Water Supplies

Sonoma Water mostly depends on the Russian River for water supply, with groundwater supply from the Santa Rosa Plain as a secondary source (to be used during drought or when the Russian River is otherwise constrained). Almost all of Sonoma Water's customers have other water supplies in addition to those provided by Sonoma Water, such as local surface water, local groundwater, and recycled water.

1.3.1 Surface Water

The Russian River watershed drains an area of 1,485 square miles that includes much of Sonoma and Mendocino counties. The headwaters of the Russian River are located in central Mendocino County, approximately 15 miles north of Ukiah. The Russian River is approximately 110 miles long and flows generally southward to Mirabel Park, where it changes course and flows westward to the discharge point at the Pacific Ocean near Jenner, approximately 20 miles west of Santa Rosa.

Two federal projects impound water in the Russian River watershed: the Coyote Valley Dam on the East Fork Russian River east of Ukiah in Mendocino County (forming Lake Mendocino), and the Warm Springs Dam on Dry Creek (a tributary of the Russian River) northwest of Healdsburg in Sonoma County (forming Lake Sonoma). Lake Mendocino has a water supply design capacity of 111,000 acre-feet (ac-ft), captures runoff from the surrounding 105-square-mile drainage area, and receives diverted water from Pacific Gas and Electric's (PG&E) Potter Valley Project on the Eel River. Lake Sonoma has a water supply design capacity of 245,000 ac-ft and captures runoff from 130 square miles of surrounding drainage area.

The United States Army Corps of Engineers (USACE) has been implementing forecast-informed reservoir operations (FIRO) at Lake Mendocino under planned deviations to the Water Control Manual (WCM) since 2019. FIRO procedures at Lake Mendocino were formalized in October 2025 when the updated WCM was finalized by USACE. FIRO uses improved hydrologic forecasts to inform decisions to retain or release water from storage. The updated WCM authorizes the USACE to store up to an additional 11,650 ac-ft of water in Lake Mendocino at its discretion during the wet season and begin progressing toward the summertime water supply pool of 111,000 ac-ft two weeks earlier than the previous WCM guide curve.

An evaluation of the viability of implementing FIRO at Lake Sonoma is currently underway. In 2023, USACE approved a request from Sonoma Water for a multi-year minor deviation to the Lake Sonoma/Warm Springs Dam Water Control Manual. The deviation authorizes USACE to store up to an additional 9,500 ac-ft of water in Lake Sonoma at its discretion until February 15, increasing to 19,000 ac-ft on March 1. This minor deviation expires on September 30, 2026. Sonoma Water plans to request a second minor deviation at Lake Sonoma that is consistent with the previous minor deviation in Fall of 2026 and request a multi-year major deviation to start in the Winter of 2027. If approved, the major deviation will include the same level of flood control pool encroachment as the minor deviation (9,500 ac-ft from November 1 to February 14), but on February 15 the spring refill will increase linearly to a level of 38,100 ac-ft on April 1. It would remain at this level through the dry season until October 1. More information about FIRO is available online at:

https://cw3e.ucsd.edu/firo_russian_river/.

1.3.2 Groundwater

Although 14 groundwater basins and sub-basins have been identified in Sonoma County, Sonoma Water has groundwater supply wells only in the Santa Rosa Plain sub-basin of the Santa Rosa Valley basin. These groundwater supply wells are located along Sonoma Water's aqueduct in the Santa Rosa Plain at Occidental Road, Sebastopol Road, and Todd Road. The three well-site facilities were

initially constructed in 1977 as emergency supply wells in response to the 1976-1977 drought. The Sebastopol Road well was replaced in 1998 and modified in 2023 by sealing off the lower 170 feet of the well screen to improve water quality. The Occidental Road Well was replaced in 1998 and again in 2023. The three wells were used for water production relatively continuously between 2000 and 2009. After 2009, Sonoma Water shifted use of the wells to an as-needed basis (i.e., during periods of drought or when Russian River supplies are otherwise constrained), as was the case in 2013-2015. New regulatory criteria for disinfection resulted in these wells being taken offline in 2016 due to treatment facility upgrades needed for compliance.

During the recent drought of 2020-2022, upgrades to the Todd Road well were completed, and the well was brought back into production during summer 2022. Similar upgrades to the Sebastopol Road well were completed in 2025. In addition to regulatory-driven construction upgrades, the Sebastopol Road Well was also retrofitted to operate as an Aquifer Storage and Recovery (ASR) well. Pilot testing of the ASR operation at the well was conducted from October 2025 through February 2026. A new well was constructed at the Occidental Road well site in 2023. Additional topside improvements completed in March 2026 for the Occidental Road well included the regulatory-driven and ASR upgrades.

Planned ASR operations involve the use of drinking water from the aqueduct for groundwater recharge by reversing the flow of the wells to store water within the aquifer system, which would then be recovered during dry periods or under Russian River supply constraints as needed.

1.4 Transmission System

Sonoma Water's transmission system extends from Sonoma Water's Russian River diversion facilities located near Forestville to the Santa Rosa, Petaluma, and Sonoma valleys. The transmission system consists of more than 90 miles of pipelines that are mostly large diameter pipelines ranging in diameter from 16 to 54 inches, six booster pump stations, and 18 storage tanks with a combined storage capacity of 130 million gallons.

Section 2

Annual Water Supply and Demand Assessment

In compliance with California Water Code §10632.1, Sonoma Water's AWSDA evaluates water supply reliability for the current year and one subsequent dry year. This section presents the AWSDA purpose, methodology, key inputs, and results.

2.1 Purpose

The AWSDA forecasts near-term water supply conditions to ensure shortage response actions are triggered in a timely manner. This annual assessment provides a description and quantification of each source of Sonoma Water's water supply compared to water demands for the current calendar year, with consideration of one subsequent dry year. Sonoma Water's annual assessment information is provided in Table 2-1.

Table 2-1. Annual Assessment Information

Annual Assessment Information	Supplier Data
Annual assessment year start	07/01/2026
Annual assessment year end	06/30/2027
Volume unit for reported supply and demand	ac-ft
Supplier's Annual Assessment Planning Cycle	
Supplier's annual assessment planning cycle start month	01/01/2026
Supplier's annual assessment planning cycle end month	12/31/2027
Data reporting interval used	Monthly
Water Supplier's Contact Information	
Water supplier's name	Sonoma County Water Agency
Contact name	Paul Piazza
Contact title	Water Use Efficiency Manager
Street address	404 Aviation Boulevard, Santa Rosa, CA
ZIP code	95403
Phone number	707.547.1968
Email address	paul.piazza@scwa.ca.gov
Report Preparer's Contact Information	
Report preparer's organization name	Brown and Caldwell
Preparer's contact name	Rene Guillen
Phone number	925.210.2464
Email address	rguillen@brwnncald.com
Supplier's Water Shortage Contingency Plan	
Supplier's Water Shortage Contingency Plan (WSCP) title	Water Shortage Contingency Plan
WSCP adoption date	05/12/2026
Other Annual Assessment Related Activities	
Annual Assessment/Shortage Report Title	Sonoma Water Water Shortage Assessment Report
Annual Assessment/Shortage Report Approval Date	Not applicable

2.2 Methodology

Sonoma Water uses the following steps as described in the water shortage contingency plan (WSCP) to develop the AWSDA:

- 1. Quantify current year water supply.** Sonoma Water uses actual supply conditions as of April of the current year and assumes the remainder of the current year (through June 30) to follow a similar historical hydrologic year based on an analysis of current watershed conditions.
- 2. Quantify subsequent year supply.** The subsequent year water supplies (July 1 through June 30) are estimated by assuming dry conditions. Sonoma Water bases the estimate of dry season water supplies on a statistical analysis of the historical hydrologic record and the selection of an appropriate exceedance frequency.



3. **Identify infrastructure constraints.** The existing infrastructure capabilities and plausible constraints as they impact Sonoma Water’s ability to deliver supplies to meet expected customer water use needs in the coming year are considered. Examples of plausible constraints include water rights curtailments, minimum instream flows, and groundwater production capacity.
4. **Quantify unconstrained water demand.** Sonoma Water uses the unconstrained water demand projections from the most recent UWMP unless more recent demand projections are provided by the water contractors. This 2026 AWSDA uses demand projections from the 2025 UWMP.
5. **Compare projected water supplies to demands.** The water supplies identified in the AWSDA represent the water demand that can be met while maintaining adequate storage in Lake Mendocino and Lake Sonoma.
6. **Identify and quantify anticipated water supply shortages, if any.** The forecast of water supplies in comparison to water demands will identify and quantify any anticipated water shortages for the current year and subsequent dry year (July 1 through June 30). The forecast will be coordinated with Sonoma Water’s customers, and if anticipated water shortages are identified, the appropriate shortage stage will be selected as outlined in the WSCP.
7. **Implications of forecasted water shortage.** Depending on the extent of the forecasted water shortage for the current calendar year and particularly the summer months, Sonoma Water may implement voluntary reductions of its diversions and request its customers to conserve and increase the use of local supplies. The State Water Resources Control Board (SWRCB) could also mandate Sonoma Water to reduce diversions. For example, mandatory reductions could be required (as specified in Sonoma Water’s water rights) if Lake Sonoma levels dropped below 100,000 ac-ft prior to July 15 of a calendar year.

2.2.1 Decision-making Process

As detailed in Sonoma Water’s WSCP, Sonoma Water continually monitors water supply conditions and acts accordingly to confirm adequate water supply and storage levels to meet customer demands and minimum instream flow requirements. Actual conditions as of early April 2026 serve as the starting point for this AWSDA and Sonoma Water develops supply projections for the remainder of the current year (through June 30) and the subsequent year (July 1 through June 30 of the following year) assuming dry conditions.

For the demand portion of the assessment, Sonoma Water uses the unconstrained demand projections from the most recent UWMP unless more recent demand projections are provided by the contractors. If the assessment forecasts a shortage in the upcoming year, Sonoma Water will activate the appropriate level of the adopted water shortage contingency plan and coordinate with the customers to implement response actions.

After the AWSDA is submitted, Sonoma Water will continue to monitor supplies and reassess shortage conditions, adjusting response actions as needed in coordination with its customers.

2.3 Key Data Inputs

The AWSDA compares projected unconstrained demand for all of Sonoma Water’s wholesale customers to the expected available water supply based on current available supply and anticipating one dry year ahead. The analysis is performed on a monthly time step and looks ahead to the next 12 months (July 1, 2026, through June 30, 2027), assuming dry conditions. The key data inputs and associated assumptions are described below.

2.3.1 Unconstrained Demand

Unconstrained demand represents the total demand for Sonoma Water’s supply, absent any restrictions or demand reduction actions. During development of the 2025 UWMP, each of Sonoma Water’s contractors and Marin Water provided annual projected unconstrained demands for Sonoma Water supply for calendar years 2026 through 2030 (as well as projections in 5-year increments through 2050), considering population growth, available local supplies, and other factors.

For Sonoma Water’s other customers, which are not required to prepare UWMPs due to their small size, the 2026 and 2027 demands are based on the unconstrained demand estimates developed by Sonoma Water for the 2025 UWMP. These projections are based on historical demands, population growth projections, and assumed available local supplies.

The total unconstrained demand also includes transmission system losses (assumed as four percent) and expected diversions by the Russian River customers (City of Healdsburg, Town of Windsor, Camp Meeker, and Occidental) under Sonoma Water’s water rights permits. For the Russian River customers (not including Windsor), it was assumed that their actual diversions in 2025 are representative of unconstrained demands for the current year and subsequent dry year.

These annual demand projections serve as the basis for unconstrained demand in the current year and subsequent dry year, which for the purpose of this analysis is defined as July 1, 2026, through June 30, 2027. Since the unconstrained demands provided for the 2025 UWMP were presented on an annual basis, Sonoma Water converted the total annual demand for calendar years 2026 and 2027 to estimated monthly demands for the AWSDA. The annual demands were converted to monthly values using the average system production for non-drought years over the last ten years (2016-2020, 2023-2025). Seasonal monthly demand curves were developed over this period for two subsets of customers: transmission system customers and another for Russian River customer diversions.

Total projected monthly unconstrained demands for July 2026 through June 2027 are presented in Table 2-2.

Table 2-2. Projected Water Demands

Month ^a	Projected Water Demand Volume ^{b, c} (ac-ft)
July	6,291
August	6,189
September	5,729
October	5,223
November	4,046
December	3,473
January	3,232
February	2,924
March	3,264
April	3,341
May	4,746
June	5,666
Total	54,123

- a. *Projected water demands start in 2026 and continue into 2027.*
- b. *Projected potable water demands include demands for all points of diversion under Sonoma Water’s water rights, with assumed four percent system losses to calculate total water transmission system production to meet demands and three percent system losses for the Russian River customer demands of the Town of Windsor.*
- c. *Projections are based on best available data at time of submitting the report; actual demand volumes could be different due to many factors.*

2.3.2 Available Water Supply

Most of Sonoma Water’s water supply comes from the Russian River, with groundwater from the Santa Rosa Plain sub-basin as a secondary source. Projections of future available water supply are based on Sonoma Water’s operations modeling of the Russian River system, using the Russian River System Model (RR ResSim). RR ResSim incorporates various data inputs, criteria, and constraints, including hydrologic conditions, levels of demand, storage levels and operational criteria for Lake Mendocino and Lake Sonoma (e.g., flood control releases), diversions from the Eel River into the Russian River (computed separately using the Potter Valley Project ResSim Model), minimum instream flow requirements, and requirements of the 2025 Russian River Biological Opinion. Given the uncertainty in future PVP diversions, the Potter Valley Project ResSim model uses the anticipated lower bound for diversions to be conservative. More detail on RR ResSim and the associated inputs are described in Section 5.1.6 of Sonoma Water’s 2025 UWMP (<https://www.sonomawater.org/UWMP>).

Sonoma Water simulates a range of scenarios using RR ResSim to understand multiple possible outcomes and takes an adaptive approach by continually monitoring water supply conditions and adjusting model inputs accordingly. For the purpose of the AWSDA, the following hydrologic assumptions were used to characterize the current year and subsequent dry year (note: the analysis is performed on a water-year basis¹ using available hydrologic data in the model; however, results are presented on a monthly basis from July 2026 through June 2027 for the AWSDA).

¹ A water year is defined as the 12-month period between October 1 and September 30 of the following calendar year.

- **For the remainder of water year 2026 (April through September):** Starting with actual observed conditions at the time of the assessment (early April 2026), Sonoma Water projected conditions through the remainder of the water year using 2008 hydrology, which represents the most similar hydrologic conditions to the current year based on observed water year flow conditions and the California Nevada River Forecast Center 30-day flow forecast. Since the current year as defined in the AWSDA ends June 30, 2026, the last 3 months in water year 2026 represent the first 3 months of the subsequent dry year in the AWSDA (July through September 2027).
- **For water year 2027 (October 2026 through September 2027):** Conditions for water year 2027 were modeled using the 1972 hydrology (tenth percentile water year based on total Russian River unimpaired flow). For the purpose of the AWSDA, results are presented on a monthly basis through June 2027.

Figure 2-1 shows how the modeled water years overlap with and inform the future dry year presented in the AWSDA.

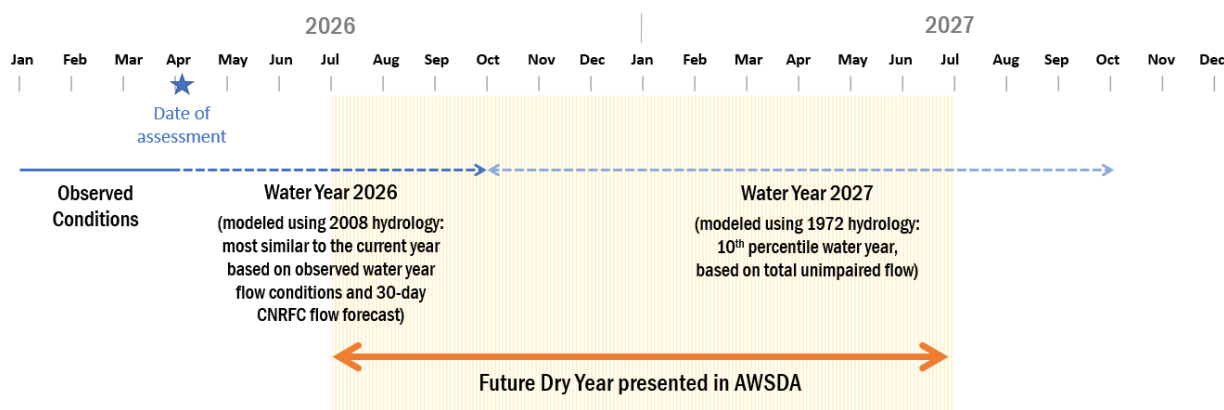


Figure 2-1. Timeline for Russian River modeling and AWSDA

Another key assumption that informs Russian River supply availability is minimum instream flow requirements as specified in Sonoma Water’s water rights permits. Sonoma Water is operating under modified terms of their water rights per a temporary urgency change order issued by the SWRCB on December 23, 2025. The order approved use of storage thresholds at Lake Mendocino to determine the water supply condition classification through June 21, 2026. Based on these storage thresholds, the water supply condition was *Normal* until April 15, 2026, when it was reclassified on April 16th as *Dry* based on the start of day storage of 84,122 ac-ft, which is below the 91,000 ac-ft threshold for *Normal* for that evaluation date and above the *Critical* threshold of 74,000 ac-ft. It is projected that the water supply condition will remain *Dry* through the summer period at least until September 30, 2026. Under the current *Dry* water supply conditions, the minimum instream flows are: 75 cubic feet per second (cfs) for the Upper Russian River, 85 cfs for the Lower Russian River, and 25 cfs for Dry Creek.

New temporary urgency change petitions (TUCPs) were filed on March 19, 2026, to continue the use of the storage threshold index for establishing water supply conditions as well as to implement the reduced summertime minimum instream flow requirements if water supply conditions were *Normal*. Both changes are actions required by the 2025 Russian River Biological Opinion. Under *Normal* water supply conditions, the minimum instream flow requirements would be reduced to 125 cfs on the Upper Russian River and 70 cfs on the Lower Russian River from May 1st through October 15th. Because the hydrologic index for the Russian River, which is defined in SWRCB Decision 1610, no

longer accurately reflects watershed conditions, Sonoma Water intends to continue the ongoing use of the Lake Mendocino storage thresholds for determining the minimum instream flow requirements via TUCPs or time-limited petitions until permanent changes can be implemented. For this report’s analysis, it was assumed that the Lake Mendocino storage thresholds requested on the March 19, 2026 TUCP would be used in the modeling to determine minimum instream flows through the entire assessment period.

Sonoma Water generally only uses groundwater as a standby source for water supply. With the current status of surface water supplies, Sonoma Water does not anticipate operating its groundwater wells for production. At this time, only the Sebastopol Road well and Todd Road well are authorized production wells under Sonoma Water’s Water Supply Permit No. 02-18-25P-4910020 issued September 4, 2025, by the SWRCB Division of Drinking Water.

The results of the water supply modeling show that there is sufficient water supply to meet the projected unconstrained demand through June 2027, assuming dry conditions; therefore, the projected supply quantities shown in Table 2-3 sum to the total demand.

Table 2-3. Projected Water Supplies

Month ^a	Surface Water Supply: Russian River Diversion Volume ^{b, c} (ac-ft)	Groundwater Supply: Santa Rosa Plain Production Wells Volume ^b (ac-ft)	Total Volume ^b (ac-ft)
July	6,291	0	6,291
August	6,189	0	6,189
September	5,729	0	5,729
October	5,223	0	5,223
November	4,046	0	4,046
December	3,473	0	3,473
January	3,232	0	3,232
February	2,924	0	2,924
March	3,264	0	3,264
April	3,341	0	3,341
May	4,746	0	4,746
June	5,666	0	5,666
Total	54,123	0	54,123

- a. Projected water supplies start in 2026 and continue into 2027.
- b. Projections are based on best available data at time of submitting the report; actual supply volumes could be different due to many factors.
- c. Includes all diversions under Sonoma Water’s water rights.

2.3.3 Existing Infrastructure Capabilities and Plausible Constraints

The projected available water supply presented in Section 2.3.2 reflects Sonoma Water’s current and expected infrastructure capabilities. Sonoma Water practices conjunctive management of surface water and groundwater and typically reserves use of groundwater as a backup supply (e.g., during dry periods or when Russian River supplies are otherwise constrained).

There are several regulatory and operational requirements and constraints that affect Sonoma Water’s Russian River supply, as described in Section 5.1 of the 2025 UWMP. These include



minimum instream flow required by Sonoma Water’s water right permits, requirements of the 2025 Russian River Biological Opinion, and PG&E’s Potter Valley Project operations. These requirements and constraints are incorporated into the RR ResSim model and are based on a certain set of assumptions. The results of the AWSDA represent the most likely outcome based on expected conditions, though it is possible that decisions by regulatory agencies or other circumstances outside of Sonoma Water’s control could further constrain Sonoma Water’s ability to divert Russian River supply. Sonoma Water continues to monitor conditions in coordination with its customers and will update modeling assumptions if there are any substantial changes.

2.4 Supply and Demand Analysis

Table 2-4 provides a comparison of projected water supply and unconstrained demand for one subsequent dry year (July 1, 2026, through June 30, 2027). The supply and demand assessment shows that there is sufficient water supply to meet the projected unconstrained demand; therefore, the projected supply is shown as equal to the demand.

Table 2-4. Potable Water Shortage Assessment

Month ^a	Anticipated Unconstrained Demand Volume ^b (ac-ft)	Anticipated Total Water Supply Volume ^b (ac-ft)	Shortage without WSCP Action (ac-ft)
July	6,291	6,291	0
August	6,189	6,189	0
September	5,729	5,729	0
October	5,223	5,223	0
November	4,046	4,046	0
December	3,473	3,473	0
January	3,232	3,232	0
February	2,924	2,924	0
March	3,264	3,264	0
April	3,341	3,341	0
May	4,746	4,746	0
June	5,666	5,666	0
Total	54,123	54,123	0

a. Projected water supplies and demands start in 2026 and continue into 2027.

b. Projections are based on best available data at time of submitting the report; actual volumes could be different due to many factors.

Section 3

Shortage Response Actions

Based on the results of the supply and demand analysis, no shortage level is triggered; however, Sonoma Water continues to coordinate with its contractors and Marin Water to support ongoing water-saving measures in alignment with the new urban water use objectives.

3.1 Planned Response Actions

The results of the supply and demand analysis show no projected supply shortage through June 2027. Therefore, there are no planned shortage response actions (Table 3-1).

Table 3-1. Planned Shortage Response Actions

Anticipated Shortage Level ^a	Water Shortage Response Actions	How Much is Action Going to Reduce the Shortage Gap?	Anticipated Implementation of Shortage Response Action: Start Month	Anticipated Implementation of Shortage Response Action: End Month
0 (No Shortage)	No Actions	0%	Not applicable	Not applicable

a. Shortage assessment for July 1, 2026 through June 30, 2027, assuming dry conditions.

3.2 Ongoing Reassessment

As discussed in Section 2.3.2, on March 19, 2026, Sonoma Water submitted TUCPs to the SWRCB to propose changes to the minimum instream flow requirements and the hydrologic index that determines the water supply condition and thence establishes the minimum instream flow schedule per the requirements of the 2025 Russian River Biological Opinion. Assuming these petitions are approved by the SWRCB, it is anticipated that the water supply condition will remain *Dry* for the remainder of the water year.

Sonoma Water will continue to assess supply and demand conditions through 2026 to determine if any additional interventions are needed to address unanticipated changes. This may result from approvals of the pending PG&E flow variance and/or license amendment that may impact Potter Valley Project diversions. These decisions will largely depend on whether dry conditions persist through the fall and winter, when the Russian River watershed typically experiences the most precipitation.

Section 4

Conclusion

The results of the AWSDA do not indicate a shortage in the upcoming year (even if conditions are dry), as water storage levels in Lake Mendocino and Lake Sonoma are currently near or at full respectively.

Sonoma Water will continue to monitor supplies and demands to reassess shortage conditions and adjust response actions, if needed.

Section 5

References

California Department of Water Resources. *Annual Water Supply and Demand Assessment Guidance*, April 2022.

California Department of Water Resources. *Annual Water Shortage Assessment Reports – Guidance Addendum*, May 10, 2023.

Sonoma Water, *2025 Urban Water Management Plan*. June 2026.

Sonoma Water, *Water Shortage Contingency Plan*. June 2026.

Appendix A: AWSDA 2026 Reporting Tables

Table 1. Annual Assessment Information	
Type of Supplier (Required to check one or two)	
Supplier is a Wholesaler	<input checked="" type="checkbox"/>
Supplier is a Retailer	<input type="checkbox"/>
If you are both a wholesaler and retailer, will you be submitting two separate reports or a combined report?	
Year Covered By This Shortage Report (Required)	
Start: July 1,	2026
End: June 30,	2027
Volume Unit for Reported Supply and Demand: <i>(Must use the same unit throughout)</i>	AF
Supplier's Annual Assessment Planning Cycle (Required)	
Start Month:	January
End Month:	December
Data Interval:	Monthly (12 data points per year)
Water Supplier's Contact Information (Required)	
Water Supplier's Name:	Sonoma County Water Agency
Contact Name:	Paul Piazza
Contact Title:	Water Use Efficiency Manager
Street Address:	404 Aviation Blvd., Santa Rosa, CA
ZIP Code:	95403
Phone Number:	(707) 547-1968
Email Address:	paul.piazza@scwa.ca.gov
Report Preparer's Contact Information <i>(if different from above)</i>	
Preparer's Organization Name:	Brown and Caldwell
Preparer's Contact Name:	Rene Guillen
Phone Number:	(925) 210-2464
Email Address:	rguillen@brwnald.com
Supplier's Water Shortage Contingency Plan	
WSCP Title	Water Shortage Contingency Plan
WSCP Adoption Date	5/12/2026
Other Annual Assessment Related Activities	
Activity	Timeline/ Outcomes / Links / Notes
Annual Assessment/ Shortage Report Title:	Sonoma Water Water Shortage Assessment Report
Annual Assessment / Shortage Report Approval Date:	not applicable
Other Annual Assessment Related Activities:	
(Add rows as needed)	



= From prior tables
= Auto calculated

Table 2: Water Demands ¹																
Use Type		Start Year:	2026		Volumetric Unit Used ² :										AF	
Drop-down list May select each use multiple times These are the only Use Types that will be recognized by the WUEdata online submittal tool (Add additional rows as needed)	Additional Description (as needed)	Level of Treatment for Non- Potable Supplies Drop-down list	Projected Water Demands - Volume ³													Total by Water Demand Type
			Jul	Aug	Sep	Oct	Nov	Dec	Jan	Feb	Mar	Apr	May	Jun		
Demands Served by Potable Supplies																
All Demands	Includes demands for all points of diversion under Sonoma Water's water rights, with assumed 4% system losses to calculate Water Transmission Production to meet demands.		6291	6189	5729	5223	4046	3473	3232	2924	3264	3341	4746	5666	54123	
															0	
															0	
															0	
															0	
															0	
															0	
															0	
Total by Month (Potable)			6291	6189	5729	5223	4046	3473	3232	2924	3264	3341	4746	5666	54123	
Demands Served by Non-Potable Supplies																
															0	
															0	
															0	
															0	
Total by Month (Non-Potable)			0	0	0	0	0	0	0	0	0	0	0	0	0	
Notes: List considered factors impacting demands																
¹ Projections are based on best available data at time of submitting the report and actual demand volumes could be different due to many factors.																
² Units of measure (AF, CCF, MG) must remain consistent.																
³ When opting to provide other than monthly volumes (bi-monthly, quarterly, or annual), please see directions on entering data for Projected Water Demand in the Table Instructions.																

Optional (for comparison purposes)	Jul	Aug	Sep	Oct	Nov	Dec	Jan	Feb	Mar	Apr	May	Jun	Total
Last year's total demand													0
Two years ago total demand													0
Three years ago total demand													0
Four years ago total demand													0



= Auto calculated	
= From prior tables	
= For manual input	

Table 4(P): Potable Water Shortage Assessment ¹													Start Year: 2026		Volumetric Unit Used ² :					AF		
	Jul	Aug	Sep	Oct	Nov	Dec	Jan	Feb	Mar	Apr	May	Jun ³	Total									
Anticipated Unconstrained Demand	6291.5	6188.6	5729.1	5222.9	4046.4	3472.8	3231.9	2924.1	3263.5	3340.8	4746.2	5665.6	54123.31									
Anticipated Total Water Supply	6291.5	6188.6	5729.1	5222.9	4046.4	3472.8	3231.9	2924.1	3263.5	3340.8	4746.2	5665.6	54123.31									
Surplus/Shortage w/o WSCP Action	0.0	0.0	0.0	0.0	0.0	0.0	0.0	0.0	0.0	0.0	0.0	0.0	0.0									
% Surplus/Shortage w/o WSCP Action	0%	0%	0%	0%	0%	0%	0%	0%	0%	0%	0%	0%	0%									
State Standard Shortage Level	0	0	0	0	0	0	0	0	0	0	0	0	0									
Planned WSCP Actions ⁴																						
Benefit from WSCP: Supply Augmentation															0.0							
Benefit from WSCP: Demand Reduction															0.0							
Revised Surplus/Shortage with WSCP	0.0	0.0	0.0	0.0	0.0	0.0	0.0	0.0	0.0	0.0	0.0	0.0	0.0	0.0	0.0							
% Revised Surplus/Shortage with WSCP	0%	0%	0%	0%	0%	0%	0%	0%	0%	0%	0%	0%	0%	0%	0%							

¹Assessments are based on best available data at time of submitting the report and actual volumes could be different due to many factors.

²Units of measure (AF, CCF, MG) must remain consistent.

³When optional monthly volumes aren't provided, verify Tables 2 and 3 use the same columns for data entry and are reflected properly in Table 4 and make sure to use those same columns to enter the benefits from Planned WSCP Actions. Please see directions on the shortage balancing exercise in the Table Instructions. If a shortage is projected, the supplier is highly recommended to perform a monthly analysis to more accurately identify the time of shortage.

⁴If you enter any WSCP Benefits, then you must enter the corresponding planned Actions into Table 5.

= Auto calculated	
= From prior tables	
= For manual input	

Table 4(NP): Non-Potable Water Shortage Assessment ¹													Start Year: 2026		Volumetric Unit Used ² :					AF		
	Jul	Aug	Sep	Oct	Nov	Dec	Jan	Feb	Mar	Apr	May	Jun ³	Total									
Anticipated Unconstrained Demand: Non-Potable	0.0	0.0	0.0	0.0	0.0	0.0	0.0	0.0	0.0	0.0	0.0	0.0	0.00									
Anticipated Total Water Supply: Non-Potable	0.0	0.0	0.0	0.0	0.0	0.0	0.0	0.0	0.0	0.0	0.0	0.0	0.0									
Surplus/Shortage w/o WSCP Action: Non-Potable	0.0	0.0	0.0	0.0	0.0	0.0	0.0	0.0	0.0	0.0	0.0	0.0	0.0									
% Surplus/Shortage w/o WSCP Action: Non-Potable																						
Planned WSCP Actions ⁴																						
Benefit from WSCP: Supply Augmentation															0.0							
Benefit from WSCP: Demand Reduction															0.0							
Revised Surplus/Shortage with WSCP	0.0	0.0	0.0	0.0	0.0	0.0	0.0	0.0	0.0	0.0	0.0	0.0	0.0	0.0	0.0							
% Revised Surplus/Shortage with WSCP																						

¹Assessments are based on best available data at time of submitting the report and actual volumes could be different due to many factors.

²Units of measure (AF, CCF, MG) must remain consistent.

³When optional monthly volumes aren't provided, verify Tables 2 and 3 use the same columns for data entry and are reflected properly in Table 4 and make sure to use those same columns to enter the benefits from Planned WSCP Actions. Please see directions on the shortage balancing exercise in the Table Instructions. If a shortage is projected, the supplier is highly recommended to perform a monthly analysis to more accurately identify the time of shortage.

⁴If you enter any WSCP Benefits, then you must enter the corresponding planned Actions into Table 5.



